

***For Ultimate Speed in 0–10 mm (0–3/8")  
Thin-Topping Applications***

# Level-Right<sup>®</sup> FS-10

***With its High-Speed  
Set and Smooth  
Performance,  
Level-Right FS-10 is  
the Self-Leveling  
Underlayment  
that won't keep  
you waiting.***



**LEVEL-RIGHT<sup>®</sup> FS-10**  
Fast Setting, 0–10 mm

# **Level-Right® FS-10.** **For a Smooth, Level Floor** **that Sets Faster than Ever.**

- New construction or renovation
- Levels entire floors or transition areas, featheredge to deepfill
- Resurfaces old or damaged concrete floors
- Up to 7200 PSI (50 MPa), hydraulic cement
- Water resistant
- Caps cracked, lightweight concrete
- Above, on or below grade
- Fills “duck ponds” in concrete floors
- No troweling required
- Provides a temporary wear surface in as little as two to four hours after application
- Experienced, authorized applicators worldwide
- Exceeds standards set by leading floor goods manufacturers
- Easy mixing — just add water
- Can be barrel-mixed or used in any continuous pumping machine
- Supported by Maxxon® Corporation

## **Levels, Smooths, Repairs —** **0–10 mm (0–3/8”), FAST!**

When the job calls for a new floor that’s smooth, level and super fast-setting, Level-Right® FS-10 comes to the rescue. Ideal for thin-topping applications over concrete, it provides a smooth, level new surface that dries fast to keep your job on schedule, and to allow for placement of floor goods soon after application.



As Level-Right FS-10 self-levels, it fills in worn, cracked and damaged areas completely.



Level-Right FS-10 handles big jobs with ease, perform stringent quality tests to assure the job

## **Large Job or Small,** **Pumped or Poured**

Got a lot of floor to cover? Level-Right FS-10 can be conveniently pumped in to save time, labor and cleanup. For smaller patching and filling jobs, Level-Right FS-10 can be easily barrel-mixed with water and poured in place. It installs from a featheredge to 10 mm (3/8") thickness in just one, easy pour.

## **Pour Today, Place Floor** **Goods Tomorrow.**

Level-Right FS-10 keeps your job on the fast track — all the way through installation of finished floor goods. It’s the edge you need to be competitive in an industry where time and cost-efficiency are more important than ever. Ceramic tile can be thin set within 2 to 4 hours. Other floor goods can be installed once Level-Right FS-10 passes a moisture test.

## **Installation**

### **Preparation**

Concrete subfloors must be fully cured, moisture free and have no efflorescence. The substrate surface shall be clean, dust and contaminant



speed and convenience. Authorized applicators 's done right.

free. Cracks should be filled with a crack filler or an elastomeric compound. Plumbing or electrical penetrations should be packed with insulation and sealed.

### Priming

To promote proper hydration and to ensure a solid bond, the subfloor must be coated with Maxxon® Floor Primer. Level-Right® FS-10 should not be poured without first priming the subfloor.

### Mixing

The Level-Right FS-10 powder and water should be mechanically mixed using a 650 rpm power mixer or Maxxon-approved pumping equipment.

### Testing

For Level-Right FS-10, field testing must be performed in accordance with modified ASTM C 109. Before independent sampling, contact the Maxxon quality control department to ensure that proper procedures are followed.

## Limitations

**(1)** Do not pour Level-Right FS-10 where the floor temperature is less than 50 °F (10 °C) or greater than 100 °F (37.7 °C).

**(2)** Protect the poured mortar from wind and sun, and from freezing temperatures for the first 72 hours.

**(3)** The concrete subfloor must be structurally sound and able to withstand live and dead loads with a deflection limitation of L/360.

**(4)** Level-Right FS-10 is for interior use only; it is not a wearing surface.

**(5)** Level-Right FS-10 will not structurally bridge over expansion joints, saw cuts or structural cracks. They should be allowed to continue through the Level-Right FS-10. The architect or structural engineer must specify expansion joints and show their location in areas that will receive hard surface floor goods such as ceramic or marble tile, and hardwood flooring.

**(6)** Maximum installation thickness without aggregate is 1/4" (8mm). For deeper pours use multiple lifts or add aggregate.

**(7)** For applications other than those over structural concrete call Maxxon Corporation for the Application Bulletin.

**(8)** Concrete moisture or vapor emission must be eliminated by others prior to a Level-Right FS-10 application for below grade, on grade or suspended slabs.

**(9)** It is the responsibility of the floor goods installer to determine the compatibility of their product with a particular floor underlayment.

**BARREL-MIXING  
LEVEL-RIGHT FS-10:**

**3 EASY  
STEPS**

### SURFACE PREPARATION AND PRIMING



### MIX WITH WATER



### POUR



## Level-Right® FS-10 Self-Leveling Underlayment TECHNICAL DATA

<b>Compressive Strengths</b> Modified ASTM C 109	Typical: 1500 PSI (10.3 MPa) 1 day 5270 PSI (36.2 MPa) 7 days 5500-7200 PSI (38-50 MPa) 28 days
<b>Freeze/Thaw Resistance</b> ASTM C 666	90% +/- 3%
<b>Dry Density</b>	approx. 120-125 lbs/ft <sup>3</sup> (1922-2003 kg/m <sup>3</sup> )
<b>Tensile Strength</b> ASTM C 190	1200 PSI (8.3 MPa) 28 days
<b>Abrasion</b>	ASTM Taber 250 Cycles, 1000 gram load on H 22, 4" wheels: wt. loss 0.30 gram
<b>Shear Bond Strength with Concrete</b> ASTM C 882-91	1060 PSI (7.3 MPa) 56 days
<b>Shear Bond Strength with Level-Right FS-10</b> ASTM C 882-91	3160 PSI (21.7 MPa) 56 days

## SECTION 03540

### Self-Leveling Concrete Floor Underlayment

#### RECOMMENDED SPECIFICATION FOR LEVEL-RIGHT® FS-10 SELF-LEVELING UNDERLAYMENT

#### PART 1 GENERAL

##### 1.01 SUMMARY

A. This is the recommended specification for Level-Right® FS-10 Cementitious Self-Leveling Floor Underlayment for topping concrete floors.

##### 1.02 SECTION INCLUDES

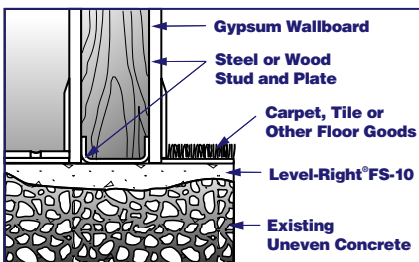
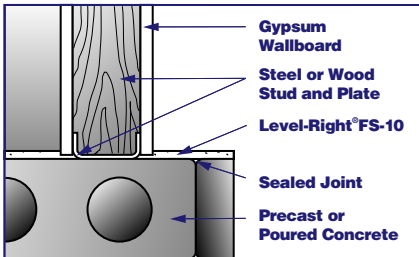
- A. Level-Right FS-10 Cementitious Self-Leveling Floor Underlayment
- B. Manufacturer Approved Primer

##### 1.03 QUALITY ASSURANCE

A. Installer's Qualifications: Installation of Level-Right FS-10 shall be by an applicator authorized by Maxxon Corporation using approved mixing and pumping equipment.

##### 1.04 DELIVERY, STORAGE AND HANDLING

A. General Requirements: Materials shall be delivered in their original, unopened packages, and protected from exposure to the elements. Damaged or deteriorated materials shall be removed from the premises.



#### 1.05 SITE CONDITIONS

A. Environmental Requirements: Before, during and after installation of Level-Right FS-10, building interior shall be enclosed and maintained at a temperature above 40 degrees F (4.5 degrees C) and below 100 degrees F (37.7 degrees C) until structure and subfloor temperature are stabilized.

#### PART 2 PRODUCTS

##### 2.01 MATERIALS

- A. Self-Leveling Cementitious Poured Floor Underlayment: Floor underlayment compound shall be Level-Right FS-10 Cementitious Self-Leveling Floor Underlayment as manufactured by Maxxon Corporation, Hamel, MN.
- B. Mix Water: Potable, free from impurities
- C. Concrete Primer: Manufacturer Approved Primer
- D. Sealer: Manufacturer Approved Sealer

##### 2.02 MIX DESIGNS

A. General Requirements: Level-Right FS-10 mix proportions and methods shall be in strict accordance with product manufacturer recommendations.

#### PART 3 EXECUTION

##### 3.01 PREPARATION

- A. Condition and Cleaning of Subfloor: Subfloor shall be structurally sound. Steel trowel concrete, concrete sealed with curing compounds, or slick or smooth substrate surfaces must be shotblast or scarified. General Contractor shall clean subfloor to remove mud, oil, grease, and other contaminating factors before arrival of the Level-Right FS-10 underlayment crew.
- B. Leak Prevention: Fill cracks and voids with a quick-setting caulk or patching material where leakage of Level-Right FS-10 could occur.
- C. Priming Subfloor: Prime concrete subfloor using Manufacturer Approved Primer. Priming instructions vary according to the porosity of the concrete; multiple coats may be necessary.
- D. Expansion Joints: Allow joints to continue through the Level-Right FS-10 at the same width.

##### 3.02 APPLICATION OF SELF-LEVELING FLOORING

A. Scheduling: Application of Level-Right FS-10 shall not begin until the building is enclosed, including roof, windows, doors and other fenestration. Install after drywall installation unless tenant finish requirements identify partitioning after the pour.

- B. Application: Place Level-Right FS-10 from 0–3/8" (0–10 mm). Spread and float Level-Right FS-10 to a smooth surface. Except at authorized joints, place Level-Right FS-10 as continuously as possible until application is complete so that no Level-Right FS-10 slurry is placed against Level-Right FS-10 product that has obtained its initial set.
- C. Drying: General Contractor shall provide continuous ventilation and adequate heat to remove moisture from the area until the Level-Right FS-10 is dry. General contractor shall provide mechanical ventilation if necessary.

##### 3.03 PREPARATION FOR INSTALLATION OF GLUE-DOWN FLOOR GOODS

A. Floor Goods Attachment: See the brochure "Procedures for Attaching Finished Floor Goods to Maxxon Underlayments" for guidelines for installing finished floor goods. This procedure is not a warranty and is to be used as a guideline only.

##### 3.04 FIELD QUALITY CONTROL

A. Field Samples: At least one set of 3 molded cube samples shall be taken from each day's pour during the Level-Right FS-10 application. Cubes shall be tested as recommended by Maxxon Corporation in accordance with modified ASTM C 109. Test results shall be available to architect and/or contractor upon request from applicator.

##### 3.05 PROTECTION

A. Protection from Heavy Loads: During construction, place temporary wood planking over Level-Right FS-10 wherever it will be subject to heavy wheeled or concentrated loads.

#### END OF SECTION

For customized CSI specs for all Level-Right FS-10 applications, see [www.Level-Right.com](http://www.Level-Right.com)

## LEVEL-RIGHT® FS-10

Fast Setting, 0–10 mm

For more information:  
1-800-356-7887  
E-mail: [info@Level-Right.com](mailto:info@Level-Right.com)  
[www.Level-Right.com](http://www.Level-Right.com)

Another superior product from  
Maxxon® Corporation

920 Hamel Road • P.O. Box 253  
Hamel, MN 55340 USA  
1-763-478-9600 • Fax: 1-763-478-2431