

**Multi-Purpose Self-Leveling Floor Underlayment**

# Level-Right<sup>®</sup> PLUS

**PLUS** represents extra performance — the self-leveling edge you need to achieve superior results, job after job.

Stronger, smoother and faster, it's the ultimate choice for 0–1½" (0–38 mm) thin-topping applications.



**LEVEL-RIGHT<sup>®</sup> PLUS**



# Level-Right<sup>®</sup> PLUS

**On the job for a super-fast set and smooth, level floors.**

- New construction or renovation
- Levels entire floors or transition areas, featheredge to deepfill
- Resurfaces old or damaged concrete floors
- Up to 7000 PSI (48 MPa), hydraulic cement
- Water resistant
- Caps cracked, lightweight concrete
- Installs above, on or below grade
- Fills "duck ponds" in concrete floors
- No troweling required
- Provides a temporary wear surface in as little as two to four hours after application
- Experienced, authorized applicators worldwide
- Exceeds standards set by leading floor goods manufacturers
- Supported by Maxxon<sup>®</sup> Corporation



#### **ON THE LEVEL —**

Maxxon applicators mark the floor with pins indicating the required pour depth. During the pour, Level-Right PLUS automatically flows to level, matching the height of the pins.

**THE MOMENT IT MEETS THE FLOOR** — Level-Right PLUS instantly finds its level, fills in voids, dips and cracks, and quickly begins to set.

## **Your proven partner in project success.**

Level-Right PLUS levels, smooths and repairs, all with superior speed and a high-strength set. It's the superior solution for 0–1½" (0–38 mm) thin-topping applications. Ideal for thin or thick-topping applications over concrete, Level-Right PLUS dries fast to keep your job on schedule, and to allow for placement of floor goods soon after application.

## **Pour on the Speed and Efficiency.**

Level-Right PLUS lets you cover a lot of floor in amazingly little time, and it conveniently pumps in to save on labor and cleanup. It installs from a featheredge to 1½" (38 mm) thickness in just one, easy pour. Ceramic tile can be thin set within 2 to 4 hours. Other floor goods can be installed once Level-Right PLUS passes a moisture test.

**ROLLING WITH THE FLOW** — A quick & easy roll is all it takes to finish a Level-Right PLUS application. Within an hour, light subtrades are back to work!



# Another Level-Right PLUS Success Story

## Project Site:

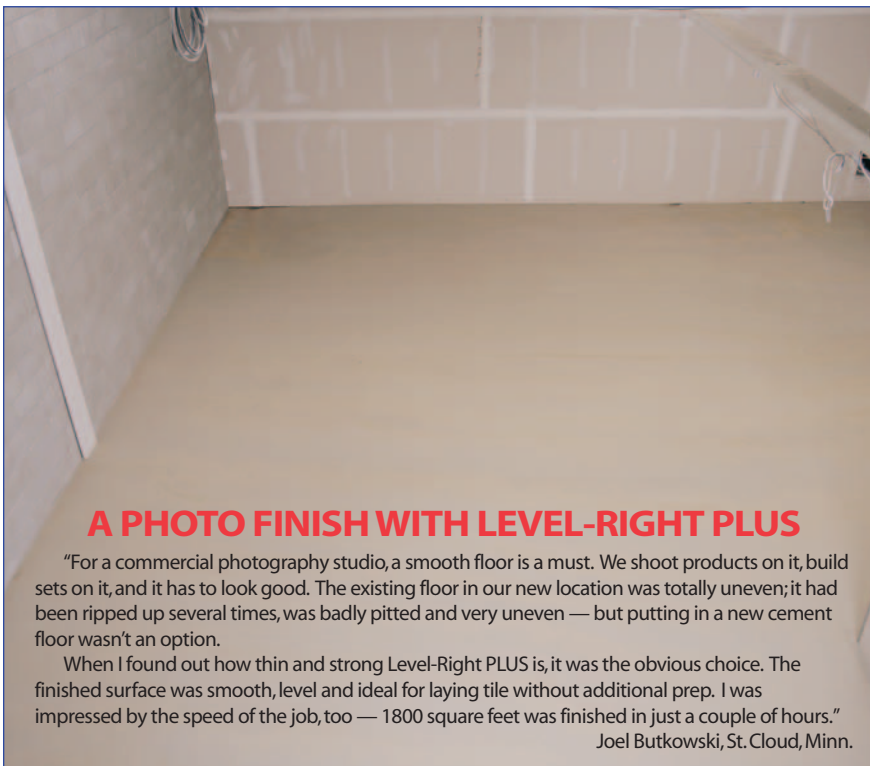
AmeriSuites Hotel  
at Mall of America, Bloomington, Minn.

## Project Scope:

- 49,000 sq. ft. of Level-Right PLUS @ 3/4" pour
- 141 hotel rooms on the 2nd through 6th floors of newly constructed hotel complex

## Contractor:

BTO Development, Minnetonka, Minn.



## A PHOTO FINISH WITH LEVEL-RIGHT PLUS

"For a commercial photography studio, a smooth floor is a must. We shoot products on it, build sets on it, and it has to look good. The existing floor in our new location was totally uneven; it had been ripped up several times, was badly pitted and very uneven — but putting in a new cement floor wasn't an option.

When I found out how thin and strong Level-Right PLUS is, it was the obvious choice. The finished surface was smooth, level and ideal for laying tile without additional prep. I was impressed by the speed of the job, too — 1800 square feet was finished in just a couple of hours."

Joel Butkowski, St. Cloud, Minn.

## Installation

### Preparation

Concrete subfloors must be fully cured, moisture free and have no efflorescence. The substrate surface shall be clean, dust and contaminant free. Cracks should be filled with a crack filler or an elastomeric compound. Plumbing or electrical penetrations should be packed with insulation and sealed.

### Priming

To promote proper hydration and to ensure a solid bond, the subfloor must be coated with Maxxon® Floor Primer. Level-Right® PLUS should not be poured without first priming the subfloor.

### Mixing

The Level-Right PLUS should be mixed using Maxxon-approved pumping equipment.

## Testing

For Level-Right PLUS, field testing must be performed in accordance with modified ASTM C 109. Before independent sampling, contact the Maxxon quality control department to ensure that proper procedures are followed.

## Limitations

(1) Do not pour Level-Right PLUS where the floor temperature is less than 50 °F (10 °C) or greater than 100 °F (37.7 °C).

(2) Protect the poured mortar from wind and sun, and from freezing temperatures for the first 72 hours.

(3) The concrete subfloor must be structurally sound and able to withstand live and dead loads with a deflection limitation of L/360.

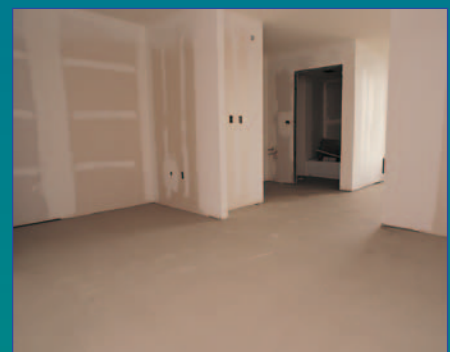
(4) Level-Right PLUS is for interior use only; it is not a wearing surface.

(5) Level-Right PLUS will not structurally bridge over expansion joints, saw cuts or structural cracks. They should be allowed to continue through the Level-Right PLUS. The architect or structural engineer must specify expansion joints and show their location in areas that will receive hard surface floor goods such as ceramic or marble tile, and hardwood flooring.

(6) For deeper fills, call Maxxon Corporation for the Application Bulletin.

(7) For applications other than those over structural concrete call Maxxon Corporation for the Application Bulletin.

(8) Concrete, moisture or vapor emission must be eliminated by others prior to a Level-Right PLUS application for below grade, on grade or suspended slabs.



## Self-Leveling Concrete Floor Underlayment

### Recommended Specification for Level-Right® PLUS Self-Leveling Underlayment

#### PART 1 GENERAL

##### 1.01 SUMMARY

A. This is the recommended specification for Level-Right® PLUS Cementitious Self-Leveling Floor Underlayment for topping concrete floors.

##### 1.02 SECTION INCLUDES

A. Level-Right PLUS Cementitious Self-Leveling Floor Underlayment  
B. Manufacturer Approved Primer

##### 1.03 QUALITY ASSURANCE

A. Installer's Qualifications: Installation of Level-Right PLUS shall be by an applicator authorized by Maxxon Corporation using approved mixing and pumping equipment.

##### 1.04 DELIVERY, STORAGE AND HANDLING

A. General Requirements: Materials shall be delivered in their original, unopened packages, and protected from exposure to the elements. Damaged or deteriorated materials shall be removed from the premises.

##### 1.05 SITE CONDITIONS

A. Environmental Requirements: Before, during and after installation of Level-Right PLUS, building interior shall be enclosed and maintained at a temperature above 50 degrees F (10

degrees C) and below 100 degrees F (37.7 degrees C) until structure and subfloor temperature are stabilized.

#### PART 2 PRODUCTS

##### 2.01 MATERIALS

A. Self-Leveling Cementitious Poured Floor Underlayment: Floor underlayment compound shall be Level-Right PLUS Cementitious Self-Leveling Floor Underlayment as manufactured by Maxxon Corporation, Hamel, MN.  
B. Mix Water: Potable, free from impurities  
C. Concrete Primer: Manufacturer Approved Primer  
D. Sealer: Manufacturer Approved Sealer

##### 2.02 MIX DESIGNS

A. General Requirements: Level-Right PLUS mix proportions and methods shall be in strict accordance with product manufacturer recommendations.

#### PART 3 EXECUTION

##### 3.01 PREPARATION

A. Condition and Cleaning of Subfloor: Subfloor shall be structurally sound. Steel trowel concrete, concrete sealed with curing compounds, or slick or smooth substrate surfaces must be shotblast or scarified. General Contractor shall clean subfloor to remove mud, oil, grease, and other contaminating factors before arrival of the Level-Right PLUS underlayment crew.  
B. Leak Prevention: Fill cracks and voids with a quick-setting caulk or patching material where leakage of Level-Right PLUS could occur.  
C. Priming Subfloor: Prime concrete subfloor using Manufacturer Approved Primer. Priming instructions vary according to the porosity of the concrete; multiple coats may be necessary.  
D. Expansion Joints: Allow joints to continue through the Level-Right PLUS at the same width.

##### 3.02 APPLICATION OF SELF-LEVELING FLOORING

A. Scheduling: Application of Level-Right PLUS shall not begin until the building is enclosed, including roof, windows, doors and other fenestration. Install after drywall installation unless tenant finish requirements identify partitioning after the pour.

B. Application: Place Level-Right PLUS from 0-1 1/2" (0-38 mm). Spread and float Level-Right PLUS to a smooth surface. Except at authorized joints, place Level-Right PLUS as continuously as possible until application is complete so that no Level-Right PLUS slurry is placed against Level-Right PLUS product that has obtained its initial set.  
C. Drying: General Contractor shall provide continuous ventilation and adequate heat to remove moisture from the area until the Level-Right PLUS is dry. General contractor shall provide mechanical ventilation if necessary.

##### 3.03 PREPARATION FOR INSTALLATION OF GLUE-DOWN FLOOR GOODS

A. Floor Goods Attachment: See the brochure "Procedures for Attaching Finished Floor Goods to Maxxon Underlayments" for guidelines for installing finished floor goods. This procedure is not a warranty and is to be used as a guideline only. It is the responsibility of the floor goods installer to determine the compatibility of their product with a particular floor underlayment.

##### 3.04 FIELD QUALITY CONTROL

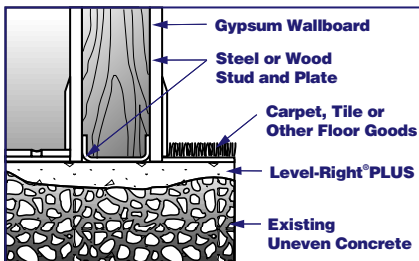
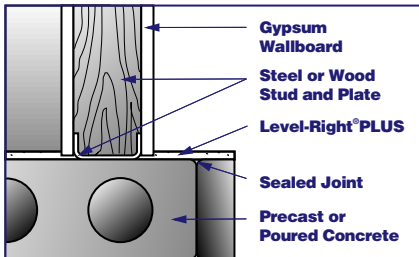
A. Field Samples: At least one set of 3 molded cube samples shall be taken from each day's pour during the Level-Right PLUS application. Cubes shall be tested as recommended by Maxxon Corporation in accordance with modified ASTM C 109. Test results shall be available to architect and/or contractor upon request from applicator.

##### 3.05 PROTECTION

A. Protection from Heavy Loads: During construction, place temporary wood planking over Level-Right PLUS wherever it will be subject to heavy wheeled or concentrated loads.

#### END OF SECTION

*For customized CSI specs for all Level-Right PLUS applications, contact Maxxon® Corporation at 1-800-356-7887.*



Level-Right® PLUS TECHNICAL DATA	
Compressive Strengths Modified ASTM C 109	Typical: 3500 PSI (24 MPa) 1 day 4500 PSI (31 MPa) 7 days 5500-7000 PSI (38-48 MPa) 28 days
Dry Density	approx. 120-125 lbs/ft <sup>3</sup> (1922-2003 kg/m <sup>3</sup> )
Tensile Strength ASTM C 190	810 PSI (6 MPa) 28 days
Flexural Strength ASTM C 348	1250 PSI (9 MPa)

## LEVEL-RIGHT® PLUS

Multi-Purpose Self-Leveling Floor Underlayment

For more information:  
1-800-356-7887  
E-mail: info@level-right.com  
www.level-right.com

Another superior product from  
Maxxon® Corporation  
920 Hamel Road, P.O. Box 253, Hamel, MN 55340 USA  
1-763-478-9600 • Fax: 1-763-478-2431